

Left atrial myxoma: the blush and the shadow!

A 55-year-old woman presented to us with complaints of exertional dyspnoea and fatigue of 1 month duration. Transoesophageal echocardiography (figure 1A) showed a 12×4 cm mobile, pedunculated mass in the left atrium. During preoperative coronary angiography, the tumour was visualised as an 'oscillating blush' through a leash of small vessels, supplied by an atrial branch of the left circumflex coronary artery (figure 1B, see online supplementary movie I). Levophase of the pulmonary artery injection (using 30 ml Iopamol, 15 ml/s, 6F Pigtail) demonstrated a negative contrast, the 'shadow' of the mass in the left atrium, which prolapsed into the left ventricle during each diastole (figure 1C, see online supplementary videos 2 and 3). The mass was surgically excised. Histopathology examination confirmed the diagnosis.

Babu Kanjirakadavath, K T Sajeer, M N Krishnan

Department of Cardiology, Government Medical College, Kozhikode, Kerala, India

Correspondence to Dr Babu Kanjirakadavath, Department of Cardiology, Government Medical College, NAS 30/1349, East Devgiri, Medical College Post, Kozhikode, Kerala 673008, India; drbabuk@yahoo.co.in

Contributors BK made substantial contributions to conception and design, acquisition of data or analysis and interpretation of data. KTS was responsible for drafting the article or revising it critically for important intellectual content. MNK was responsible for final approval of the version to be published.

Competing interests None.

Patient consent Obtained.

Provenance and peer review Not commissioned; internally peer reviewed.

► Additional material is published online only. To view please visit the journal online (<http://dx.doi.org/10.1136/heartasia-2013-010318>).

To cite Kanjirakadavath B, Sajeer KT, Krishnan MN. *Heart Asia* Published Online First: [please include Day Month Year] doi:10.1136/heartasia-2013-010318

Heart Asia 2013;00:75. doi:10.1136/heartasia-2013-010318

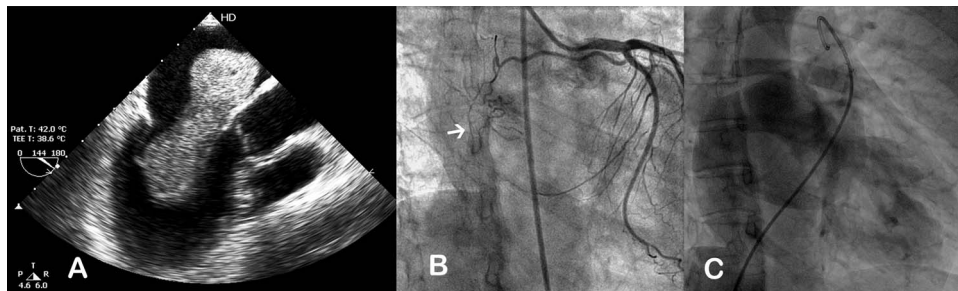


Figure 1 (A) Transoesophageal echocardiography, modified midesophageal long-axis view shows the 12×4 cm left atrial myxoma. (B) Coronary angiography, right anterior oblique view, left coronary injection, shows 'blush' of the myxoma (white arrow), vascularising from left circumflex artery. (C) Negative contrast 'shadow' of the myxoma during levophase of pulmonary arterial contrast injection in right anterior oblique view.