

Left atrial appendage myxoma: 'the elephant's trunk'!

A 72-year-old lady presented with history of recurrent episodes of syncope. Examination revealed a mid-diastolic murmur at apex. Electrocardiogram showed left atrial enlargement. Chest X-ray was normal. Transthoracic echocardiography showed a mobile left atrial mass of mixed echogenicity (see online supplementary video 1). Transoesophageal echocardiography confirmed a 60×30 mm, broad-based, pedunculated mass arising from left atrial appendage, resembling an 'elephant's trunk' prolapsing through the mitral valve to the left ventricle during each diastole (figure 1, see online supplementary video 2). The mass was surgically excised. Histopathology was consistent with cardiac myxoma.

K T Sajeer, G Rajesh, M N Krishnan

Department of Cardiology, Government Medical College, Kozhikode, Kerala, India

Correspondence to Dr K T Sajeer, Department of Cardiology, Government Medical College, Kozhikode, Kerala 673008, India; drsajeerkt@gmail.com

Contributors KTS: substantial contributions to conception and design, acquisition of data, or analysis and interpretation of data. GR: drafting the article or revising it critically for important intellectual content. MNK: final approval of the version to be published.

Competing interests None.

Patient consent Obtained.

Provenance and peer review Not commissioned; internally peer reviewed.

► Additional material is published online only. To view please visit the journal online (<http://dx.doi.org/10.1136/heartasia-2013-010334>).

To cite Sajeer KT, Rajesh G, Krishnan MN. *Heart Asia* Published Online First: [please include Day Month Year] doi:10.1136/heartasia-2013-010334

Received 30 April 2013

Accepted 5 May 2013

Heart Asia 2013;00:81. doi:10.1136/heartasia-2013-010334

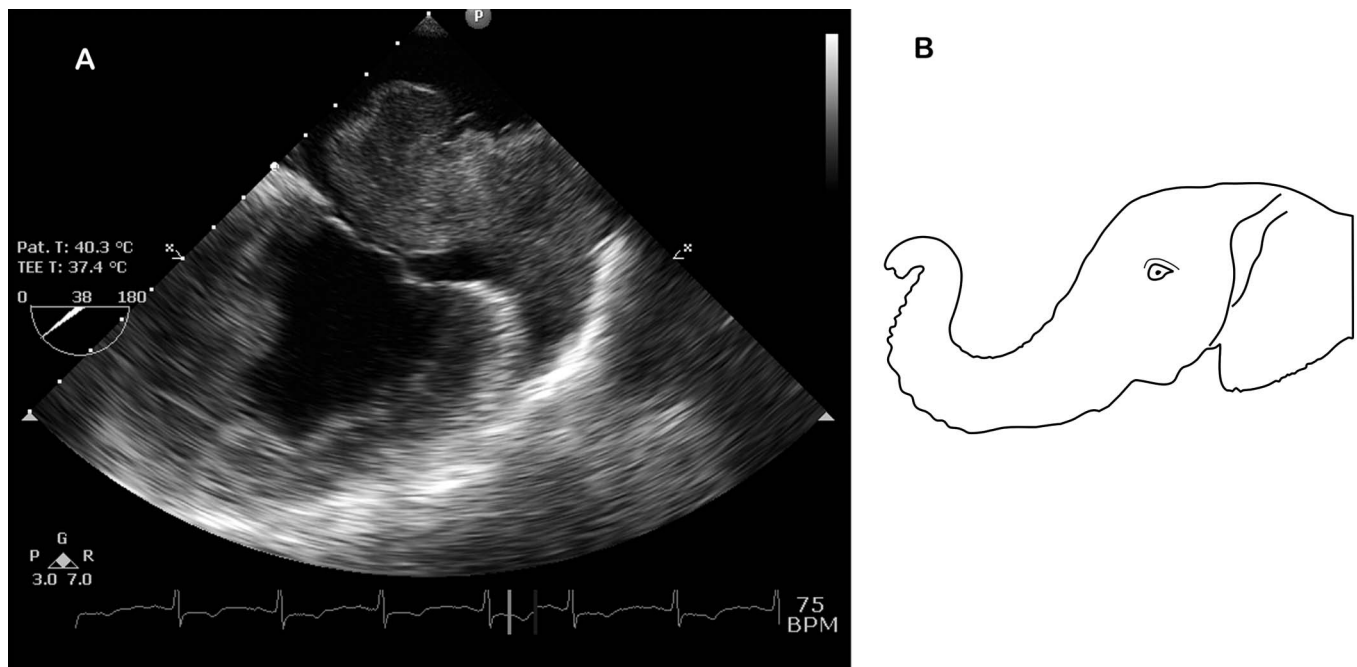


Figure 1 (A) Transoesophageal echocardiography, mid-oesophageal two chamber view, showing myxoma arising from left atrial appendage resembling the trunk of an elephant (B). The peduncle is broader, when it arises from the left atrial appendage, when compared with the narrow base when myxoma arises from the interatrial septum.