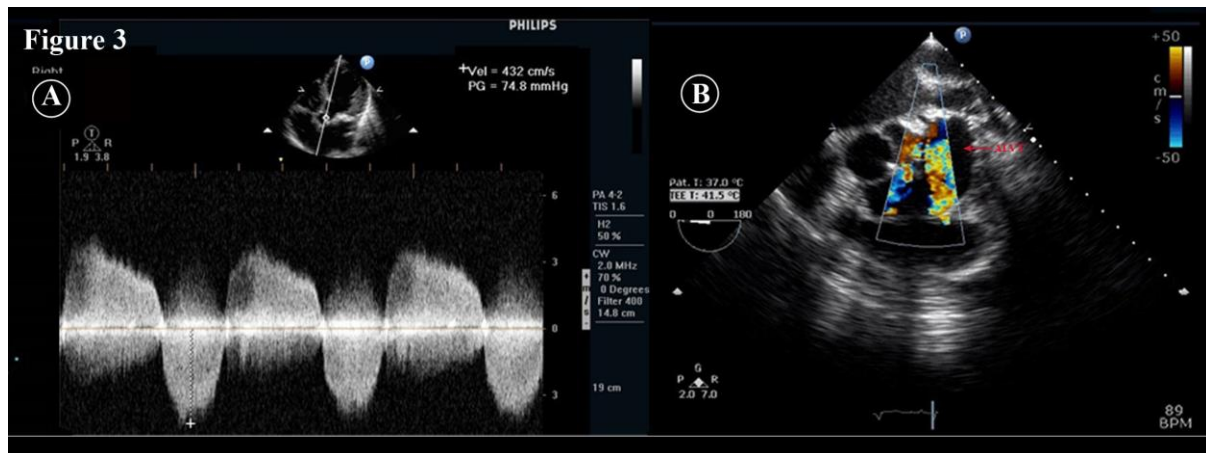


### Supplementary Files:

**Figure 3:** (A) Continuous wave Doppler suggestive of severe aortic stenosis. (B) Transesophageal echocardiography showing the flow from the aorta into the ALVT.



**Audio clip 1:** Audio recording from the aortic area and left sternal border using an electronic stethoscope reveals a systolo- diastolic murmur.

### Video captions:

**Video 1:** Parasternal long axis view showing the ALVT and opening of the tunnel into the left ventricle.

**Video 2:** Color Doppler echocardiography showing severe regurgitation through the tunnel.

**Video 3:** Parasternal short axis view showing the ALVT and bicuspid aortic valve.

**Video 4:** Aortic root angiogram LAO projection showing the ALVT and severe regurgitation through the tunnel into the left ventricle.

**Video 5:** Aortic root angiogram AP view showing the ALVT.