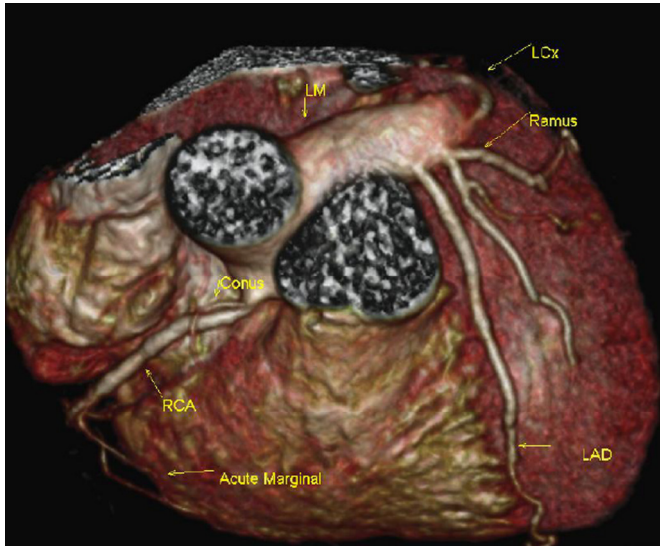
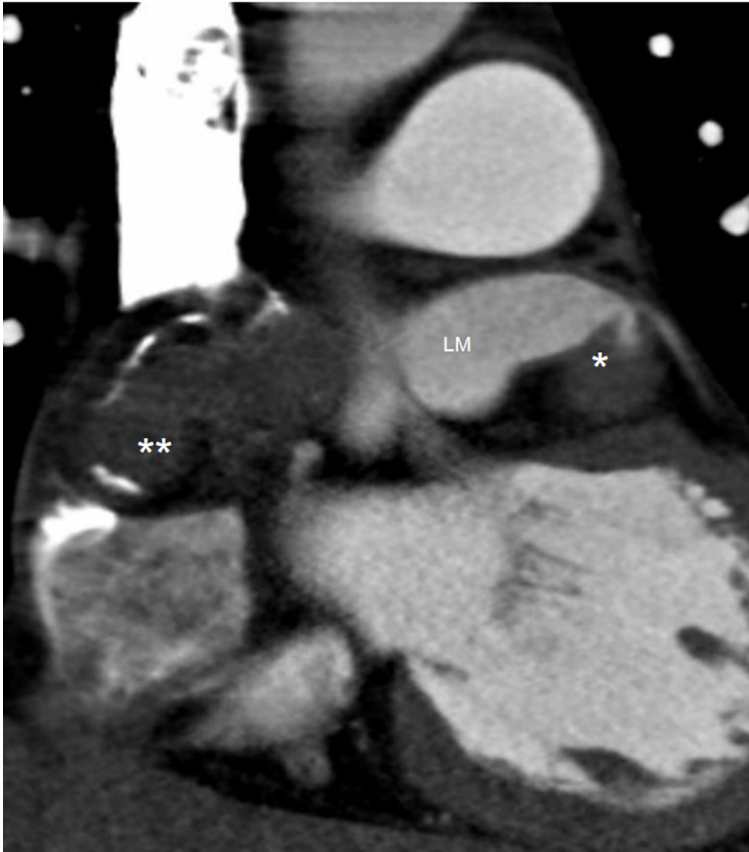


**Supplemental Figure A:** Three-dimensional reconstruction of the CT coronary angiogram showing the aneurysmal left main artery



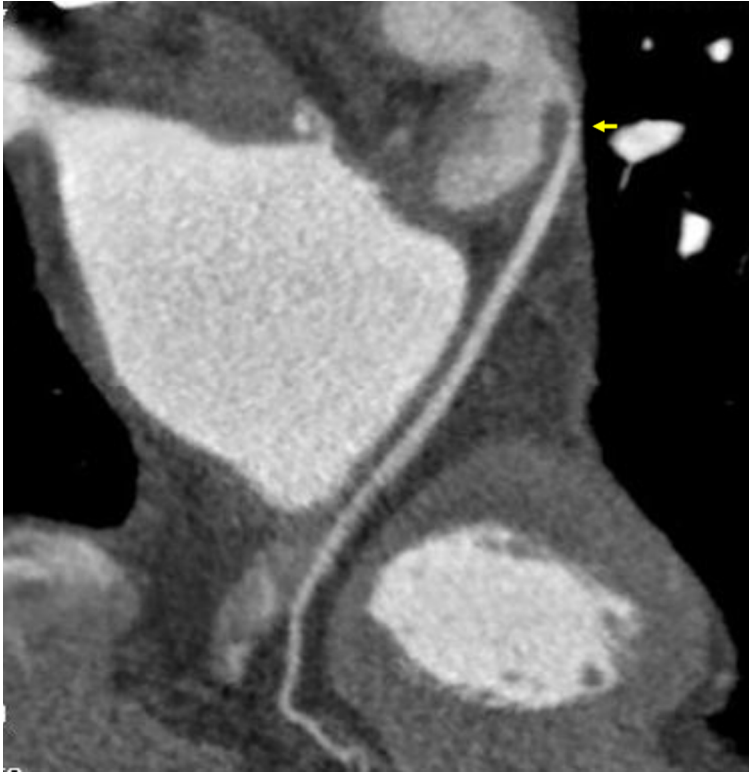
LM = Left main artery, LCx = Left circumflex artery, LAD = Left anterior descending artery, RCA = Right coronary artery

**Supplemental Figure B:** CT coronary angiogram illustrating the origin of the arteriovenous malformation from the left main artery and draining into the right atrium



LM = Left main artery, \* = origin of the coronary arteriovenous malformation from the left main artery, \*\* = draining site of the coronary arteriovenous malformation into the right atrium

**Supplemental Figure C:** Curved reconstruction demonstrating narrowing of the proximal left circumflex artery



Arrow denotes site of narrowing of the origin of the left circumflex artery due to the thrombus in the coronary arteriovenous malformation